

06440023/02

ROMEO

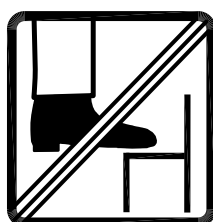
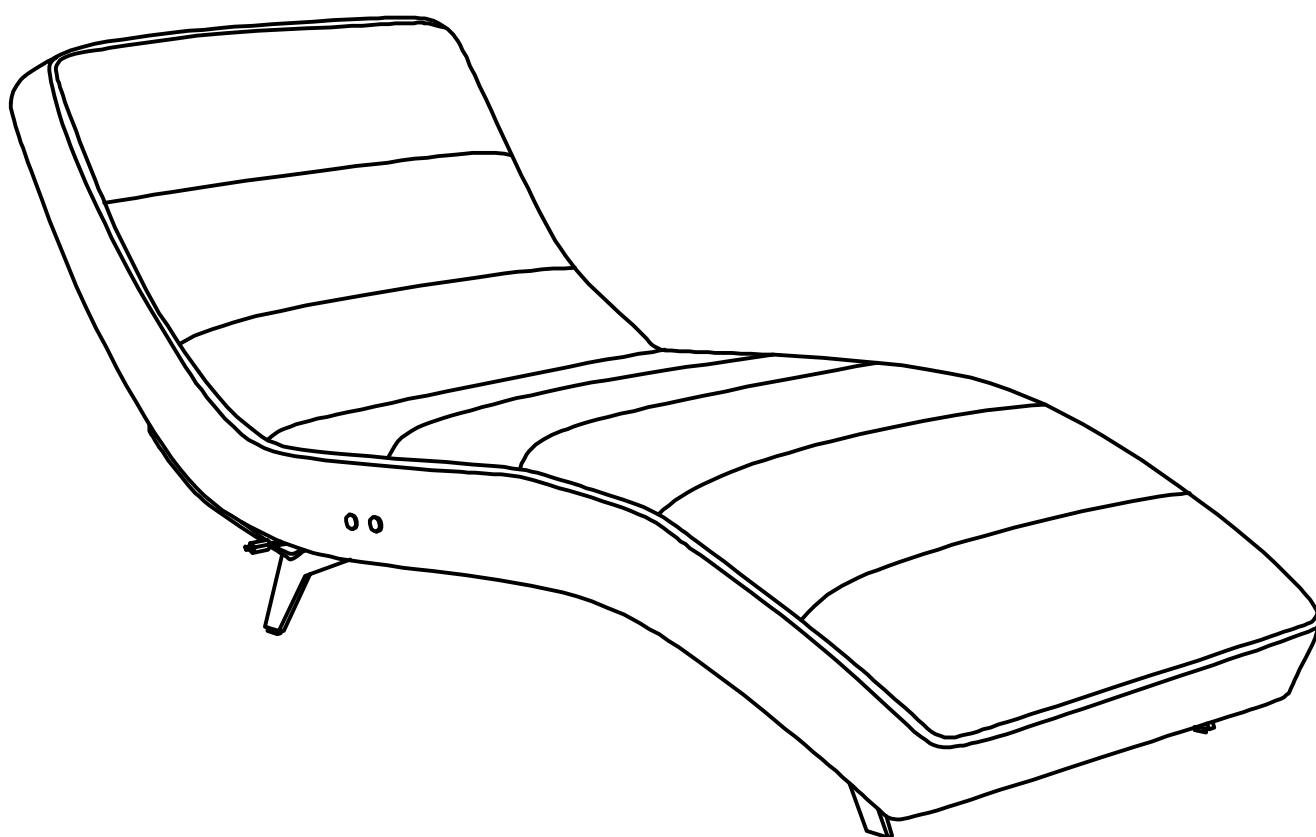
16WJH

MX Logistika SL, spol.s.r.o.

ROZNAVSKA 32,

SK-82104 BRATISLAVA, Slovakia

E-Mail: info@moebelix.at



READ CAREFULLY AND KEEP FOR FUTURE REFERENCE

Maintenance work on electrical connections of the chair or on electrical auxiliary / control connections may only be carried out by qualified electricians. Before starting troubleshooting, the mains plug must be unplugged. In order to avoid accidents, please read the following notes regarding use:

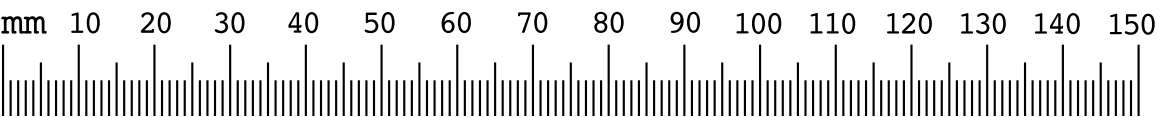
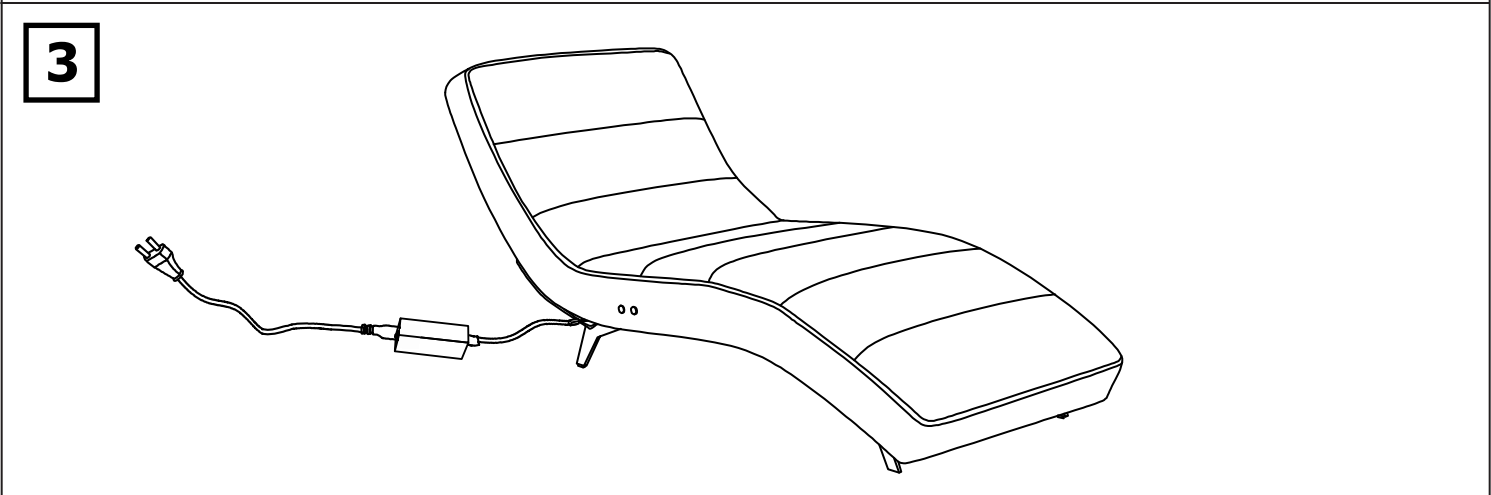
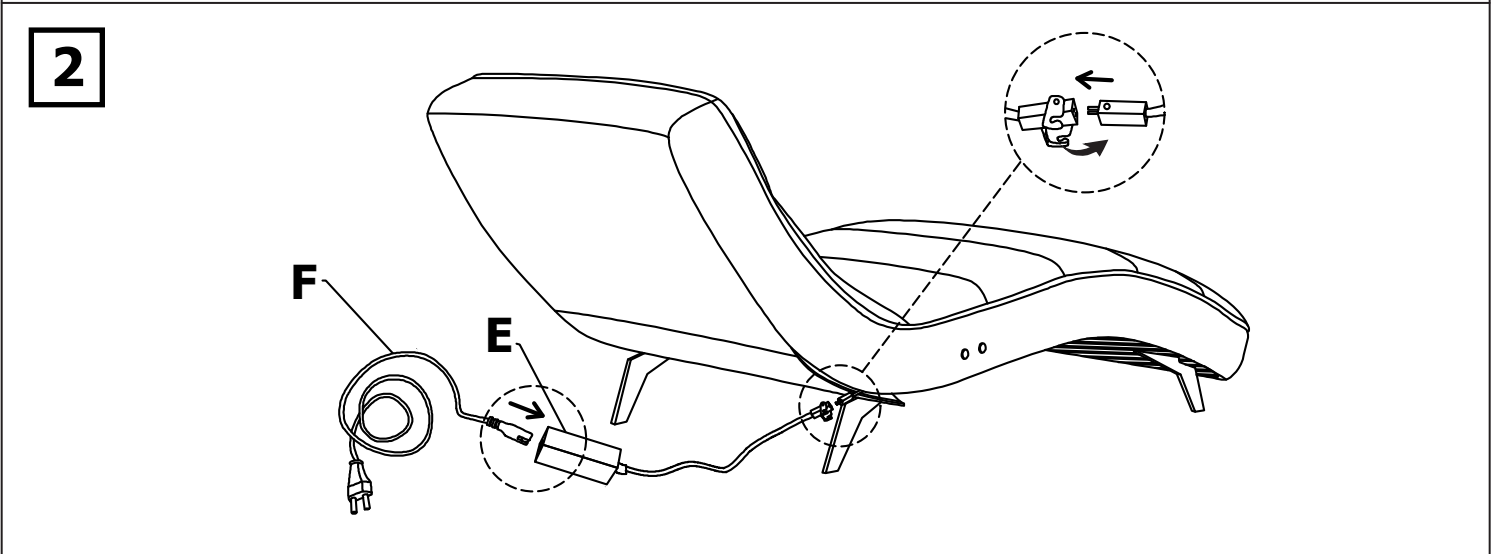
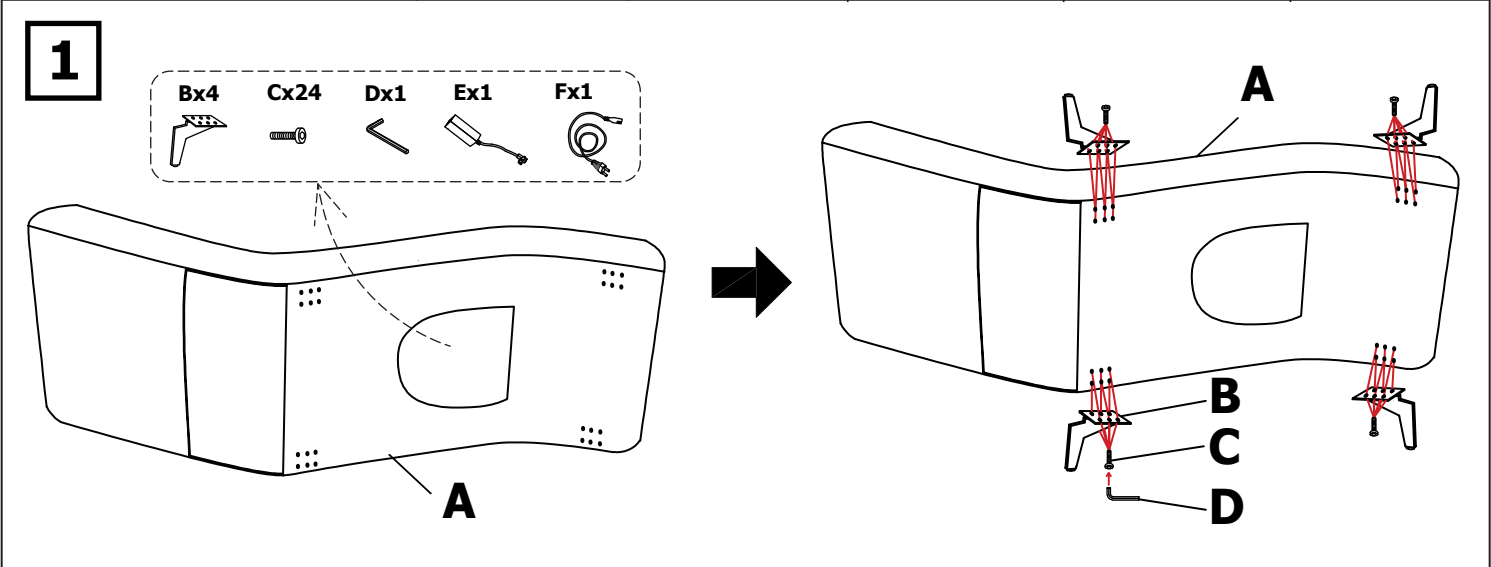


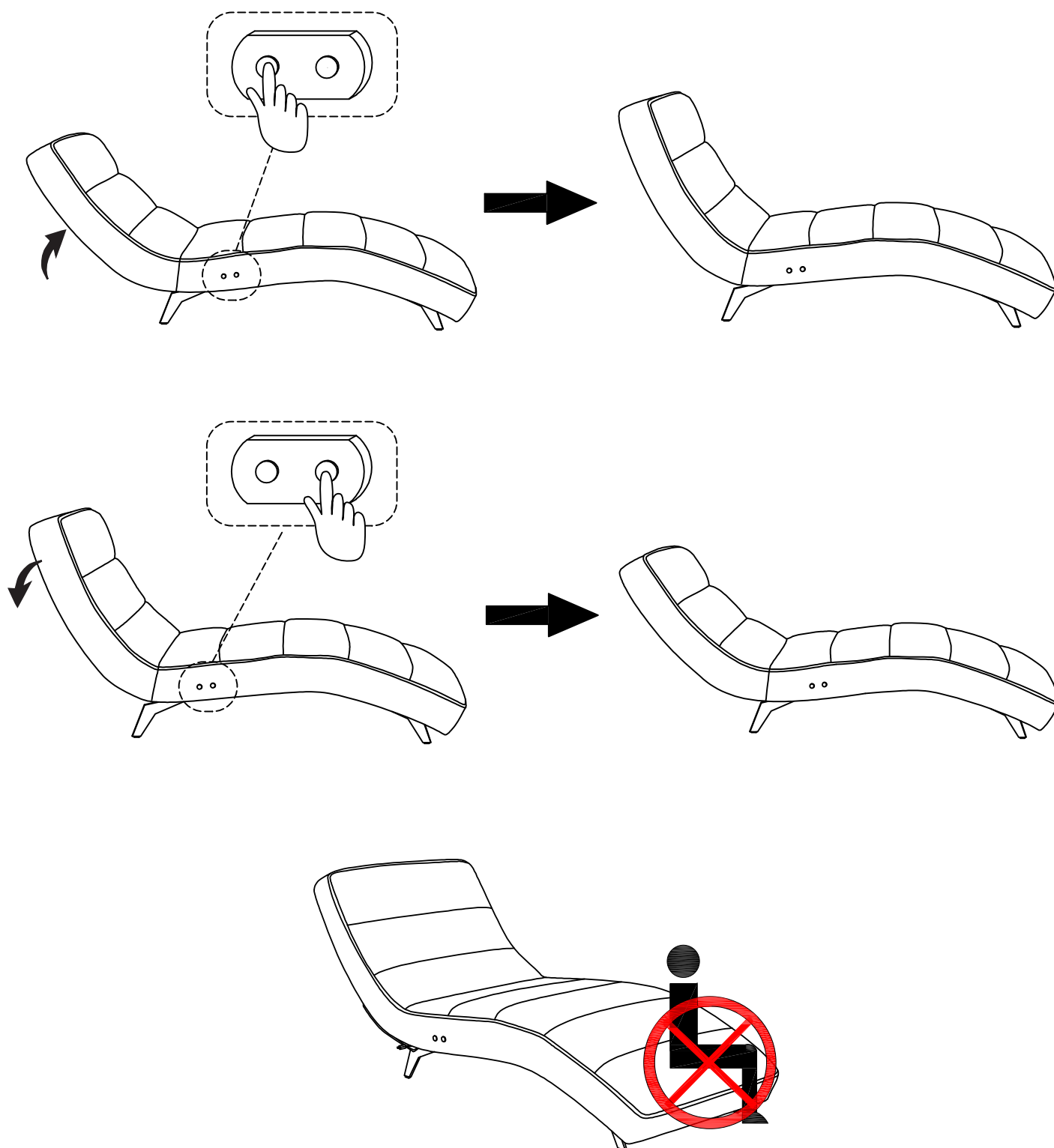
- **WARNING** Beware of moving parts
- **WARNING** Do not allow children to play with this item of furniture
- **WARNING** Do not leave children under 14 years of age unsupervised with this item of furniture
- **WARNING** Do not allow children under 14 years of age operate this item of furniture
- **WARNING** Check for the presence of pets before operating this item of furniture
- **WARNING** Disconnect this item from the power supply before moving or cleaning.
- **WARNING** Do not allow children to play with the furniture.
- **WARNING** Do not sit on the armrests or the backrests.
- **WARNING** Important safety instructions. It is important for the safety of persons to follow these instructions. Save these instructions.
- **WARNING** This product is not suitable for self-assembly/installation. Assembly and installation should be carried out by a competent person only.
- **WARNING** This item of furniture contains no user maintainable parts. In the event of a fault contact your supplier.
- **WARNING** The product is suitable for the private household and not for the commercial purpose.
- Examine the appliance frequently for signs of wear or damage. If there are such signs or if the appliance has been misused or does not work, contact the supplier for further information.
- The leg rest part is not designed to support the weight of user!!!
- Make sure the item is set up in a flat, non-sloping place.
- Keep children of less than 14 years away from the furniture unless they are constantly under surveillance.
- The furniture can be operated by person of 14 years and older if they have been instructed concerning use of the furniture in a safe way and understands the hazards involved.
- When operating a switch that initiates and maintains the movement of the furniture or terminates the movement of the furniture or causes a change of the direction of the movement of the furniture, make sure that other persons are kept away.
- Placement of furniture to avoid creating entrapment hazards with other furniture.
- This appliance can be operated by person aged from 14 years and above and persons with reduced physical, sensory or mental capabilities or lack of experience and knowledge if they have been given supervision or instruction concerning use of the appliance in a safe way and understand the hazards involved. Children shall not play with the appliance. Cleaning and user maintenance shall not be made by children without supervision.
- This appliance shall not be installed in area where the general public including children have access.

- This item of furniture contains no user maintainable parts. In the event of a fault contact your supplier.
- The appliance is only to be used with the power supply unit provided with the appliance.
- Use the product only for its intended purpose.
- Keep children away from the packaging material. Be careful not to put them over your head or swallow parts of them. Suffocation !!!
- Do not stand or sit on the extended backrest or footrest. Do not stand on the chair when the stand-up aid is raised!
- Regularly check electrical cables and connections for damage. Damage must be remedied immediately by an authorized specialist or specialist. The appliance must not be opened or repaired by yourself!
- The product may not be repaired or opened in case of defects. If the product is defective, please return it to an authorized dealer or ask for repair.
- Unplug the power cord from the wall outlet when the chair is taken out of service for a long period of time,
- Keep your furniture away from direct sunlight.
- To clean, use a damp cloth or sponge or wipe dry with a lint-free cotton cloth.
- Do not use cleaning fluid or alcohol to clean the chair surface.
- Cleaning and user maintenance shall not be made by children.
- Always disconnect the furniture from the supply before assembling, disassembling, performing maintenance or cleaning.

Max loading weight : 120 kg

Ax1	Bx4	Cx24	Dx1	Ex1	Fx1
		M6*20mm	M6		



Function :

In the event of an emergency, the power socket must be easily accessible so that the power plug can be pulled out without any problems.

Troubleshooting

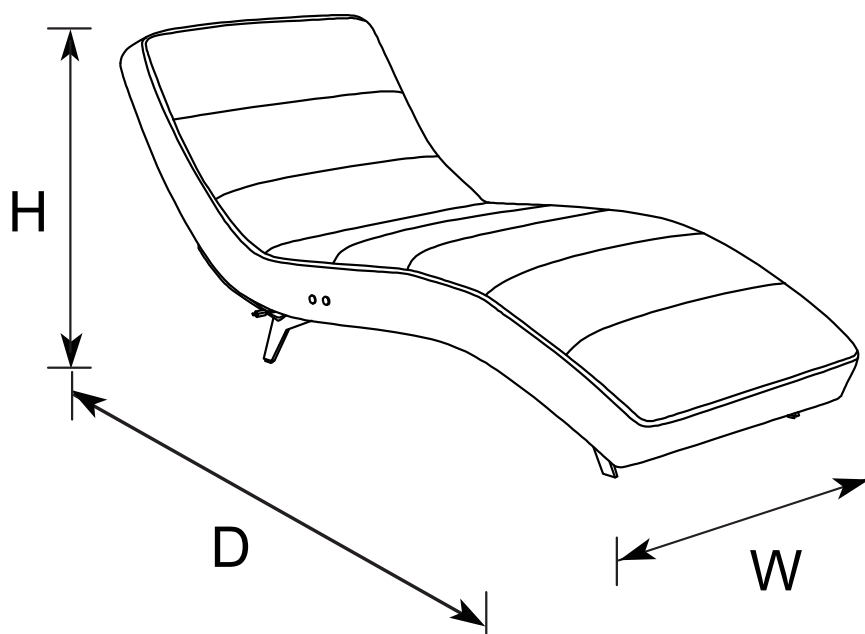
Problem	Possible reason	Solution
The chair does not react	The power button is not turned on or not connected the cable.	Check power button and power cable
The functions stop abruptly	The chair was too long in operation.	Stop functions for 1/2 h.

Dimensions:

At normal position:

Height: 74 cm, Width: 73 cm, Depth: 174 cm,

Weight: 30 kg

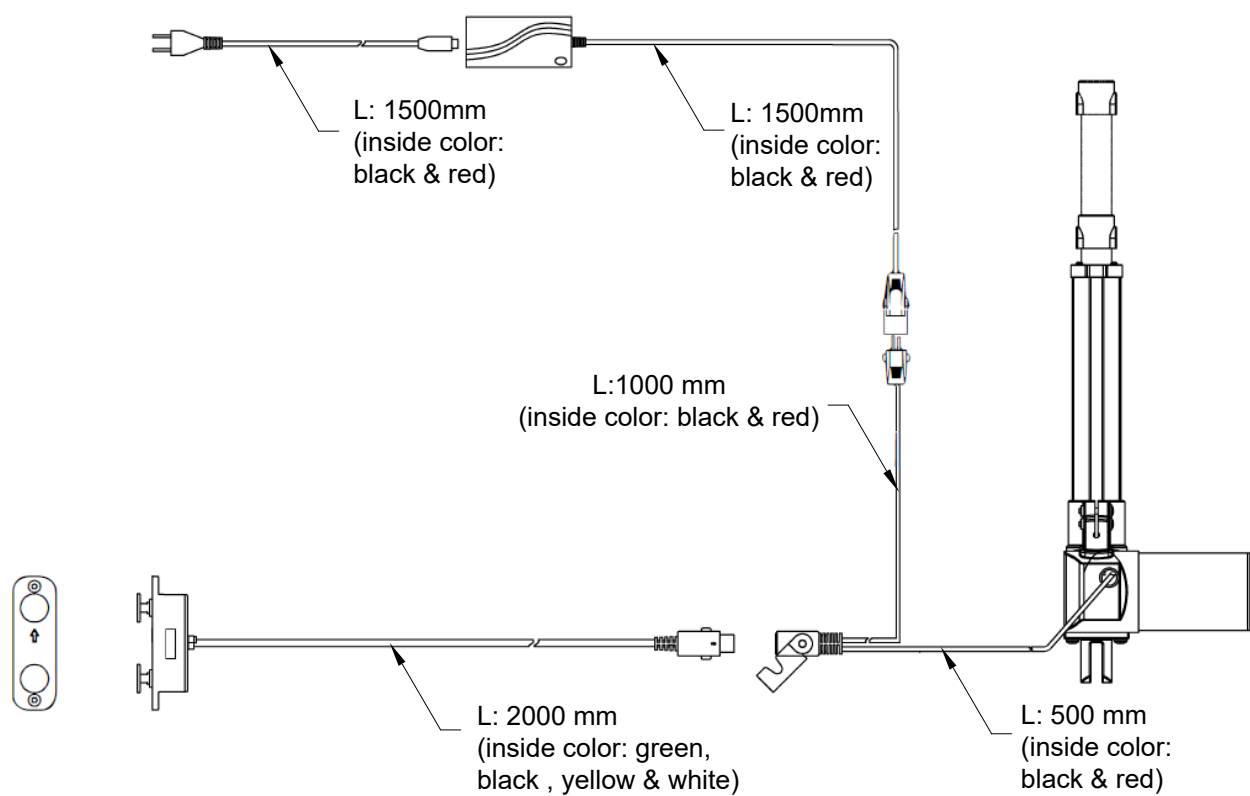


Normal position

Importer: MX Logistika SL, spol.s.r.o., ROZNAVSKA 32, SK-82104 BRATISLAVA, Slovakia

Manufacturer: RRR Company Limited(Thailand), 183 Regent House 17th Floor, Lumpini, Patumwan, Bangkok Thailand 10330

Schematic diagram



Disposal instructions:



According to the European WEEE Directive, electrical and electronic devices must not be disposed of with household waste. Its components must be recycled or disposed of separately, because toxic and dangerous components can cause lasting damage to the environment if they are improperly disposed of.

As a consumer, you are obliged under the Electrical and Electronic Equipment Act (ElektroG) to return electrical and electronic devices at the end of their service life to the manufacturer, the point of sale or to public collection points set up for this purpose free of charge. Details are regulated by the respective state law. The symbol on the product, the operating instructions and/or the packaging refers to these regulations. With this type of material separation, recycling and disposal of altar devices, you are making an important contribution to protecting our environment.

Product labeling and symbols



NAMEPLATE

Lounge Chair Year/Month : 25/08	Lounge Chair AC power supply: 100-240VAC 50-60Hz, 1.6A Max AC power supply unit: ZB-H290020_A 2 min ON and 18 min OFF (10%) 120 KG Max. 08/2025
------------------------------------	-------------------------------------------------------------------------------------------------------------------------------------------------------------------

SYMBOLS



Be part of in the electrical and electronic equipment waste



CE marking (includes compliance with EU health, safety and Environmental management)



For indoor use. The Resting and Lift up is only suitable as a seat indoors by a maximum of one person.



Pay attention to instruction manual and warning.



Class II equipment

The chair may be used a maximum of 2 minutes under maximum load, then a dwell time of up to 18 minutes must be stopped.

Max 2/18