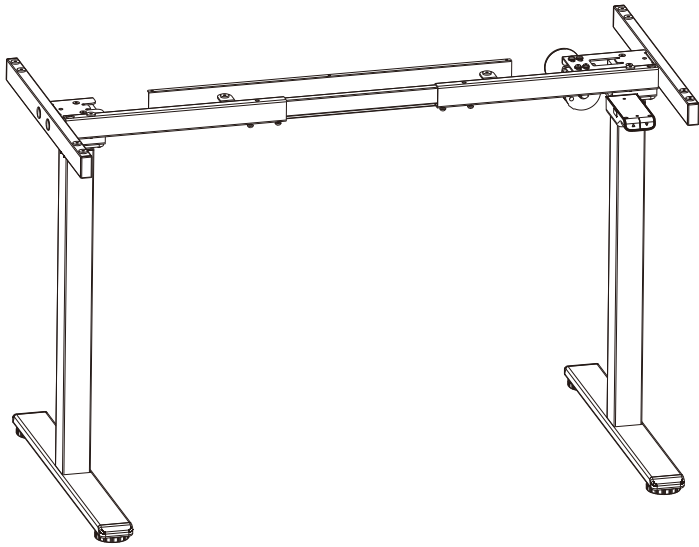


Item No. : **ET116G(IB)**  
Installation guide




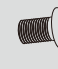







Technical data

Product No.	ET116G(IB)	
Column Stage	2	
Max. Load Capacity	70KG	
Max. Speed	25mm/s	
Power Input	100-240V	
Highest Position	1215mm	
Lowest Position	715mm	
Tabletop Dimensions	Length1000~1600mm	Width500~750mm
Frequency	10% (Work continuously for 2 minutes, pause for 18 minutes)	
Temperature	0-40°C	

Accessory list

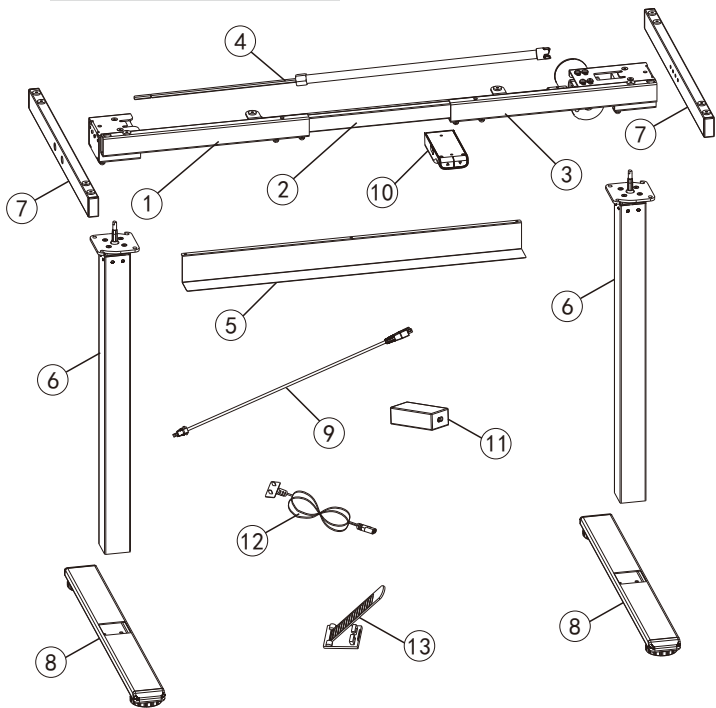
Attention: The drawings below are for guidance only and they may differ slightly from the product and fittings received. Please contact customer service department if there are any missing tools or installation problems.

<b>A</b>	x4	<b>B</b>	x2	<b>C</b>	x3	<b>D</b>	x4	<b>E</b>	x4	<b>F</b>	x8	<b>G</b>	x10	<b>H</b>	x2		x2
																	
Plug		ST4.2x16		ST4.2x13		M6x12		M6x12		M6x16		ST4.2x55		4*4 Inner Hexagon Allen Key/ 5*5 Allen Key (with cross)		2.5*2.5 Allen Key/ Nut Wrench	

Component List

No.	Part	Qty	No.	Part	Qty
①	Left Beam	1	②	Crossbeam Connecting Pipe	1
③	Right Beam	1	④	Transmission Rod	1
⑤	Decorative Plate	1	⑥	Lifting Column	2
⑦	Side Tube	2	⑧	Foot	2
⑨	Switch Cord	1	⑩	Handset	1
⑪	Power Adapter	1	⑫	Power Plug	1
⑬	Cable Tie	4			

Installation Diagram



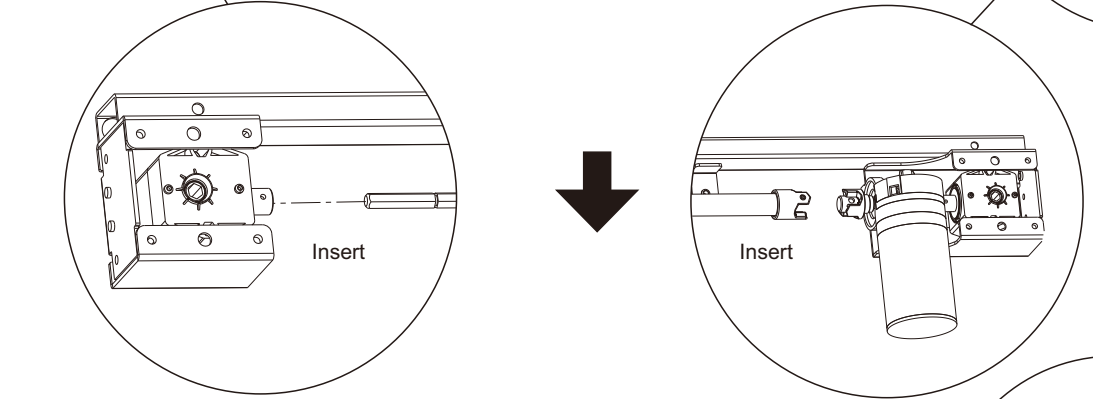
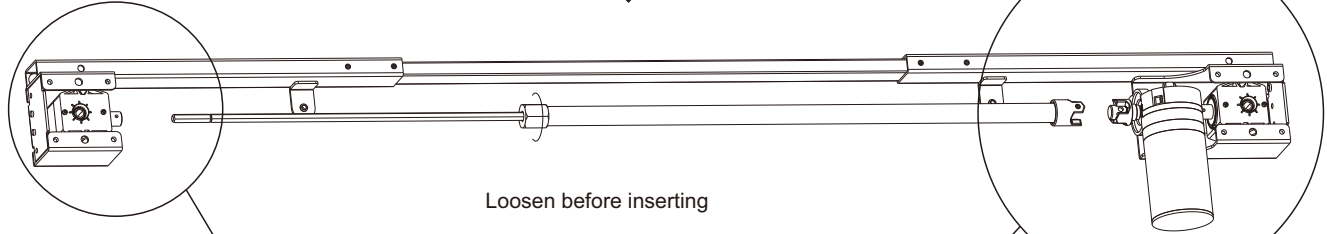
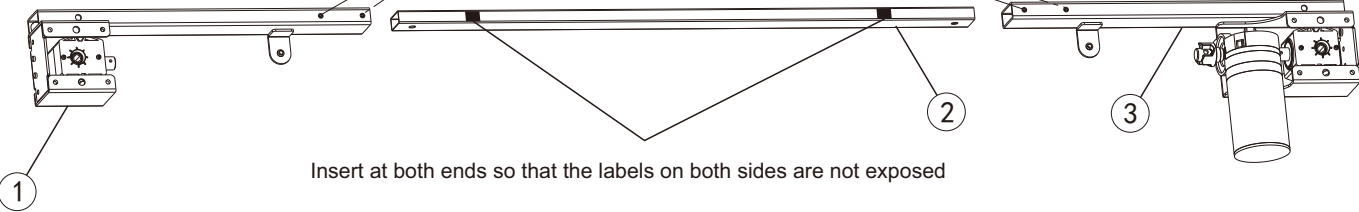
STEP1

Install Beam and Transmission Rod

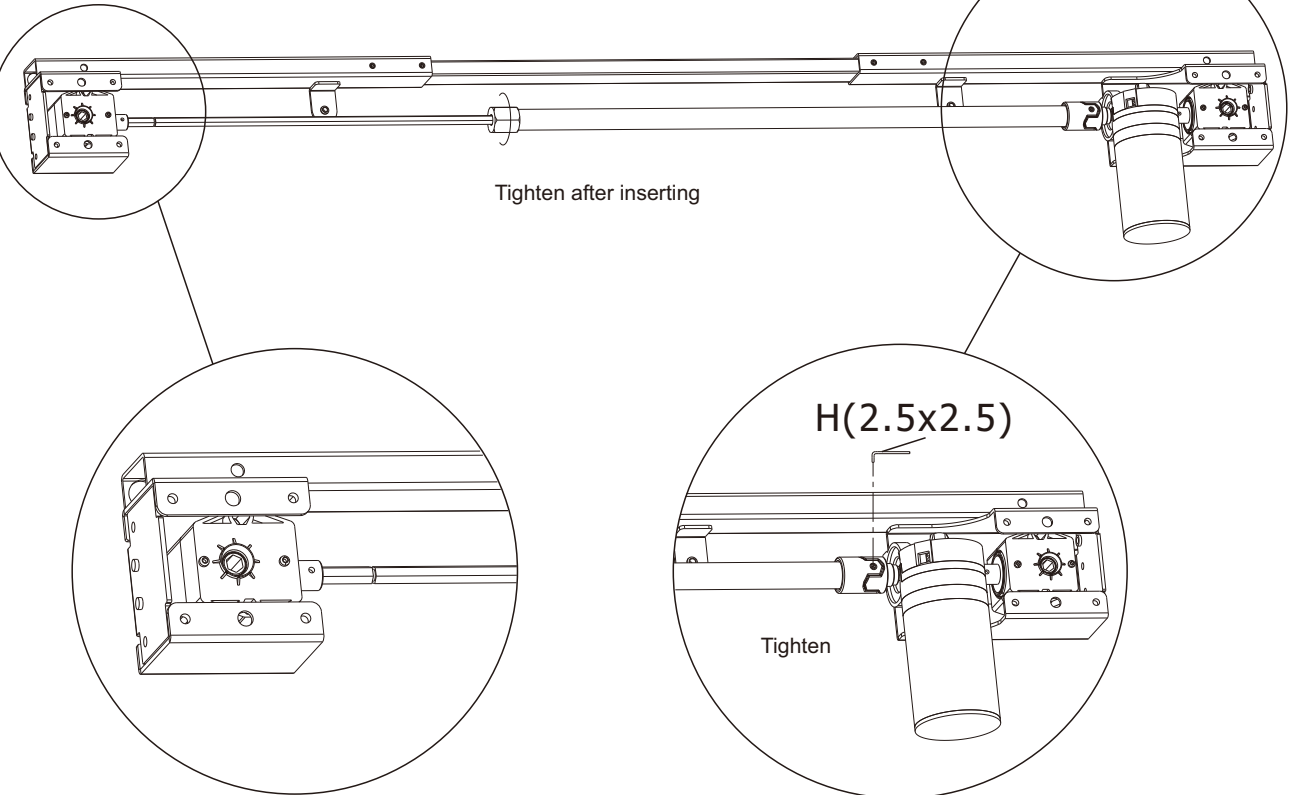
H(4x4)

H  
4x4/  
2.5x2.5  
x2

Loosen

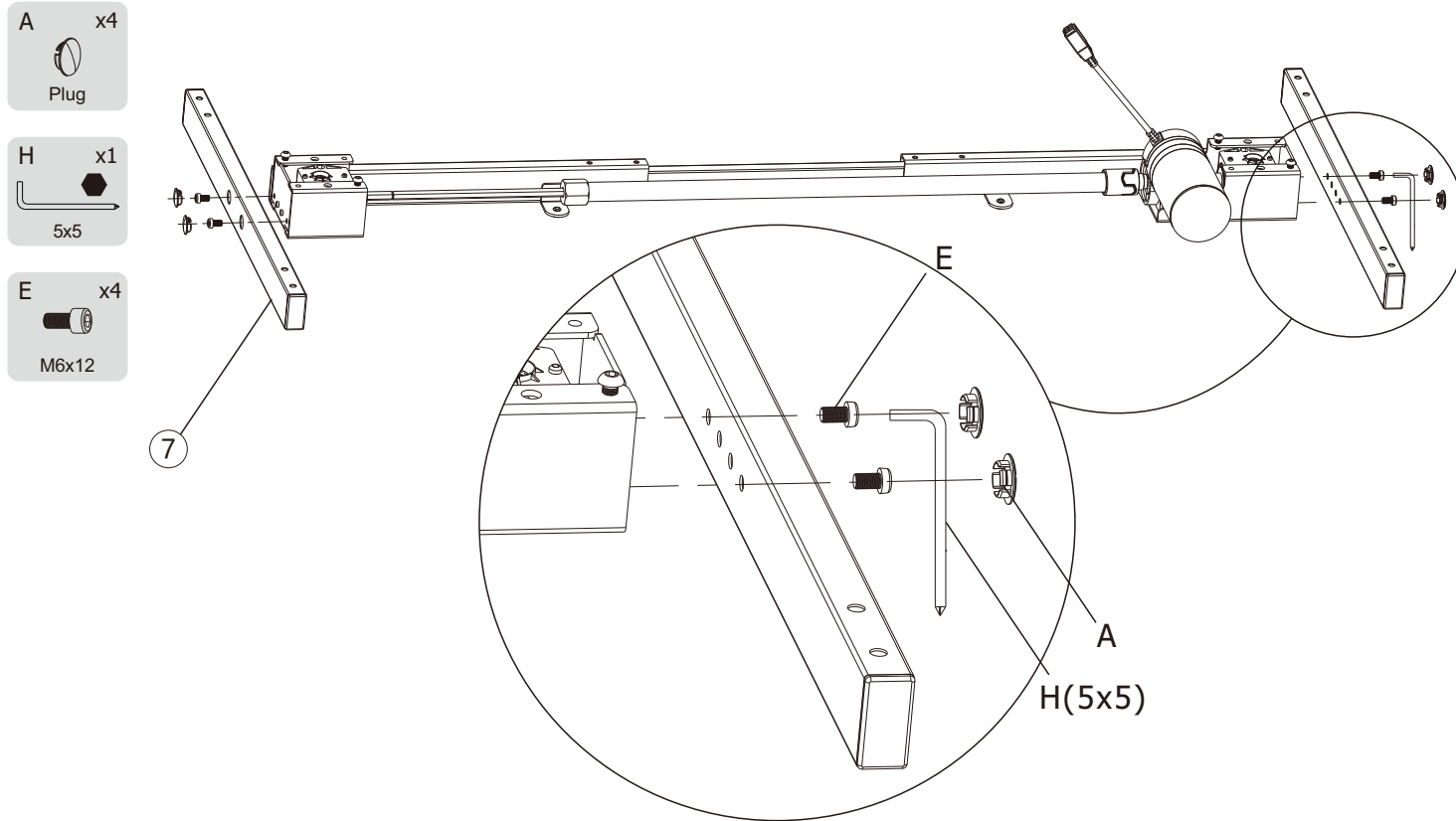


Tighten after inserting



## STEP2

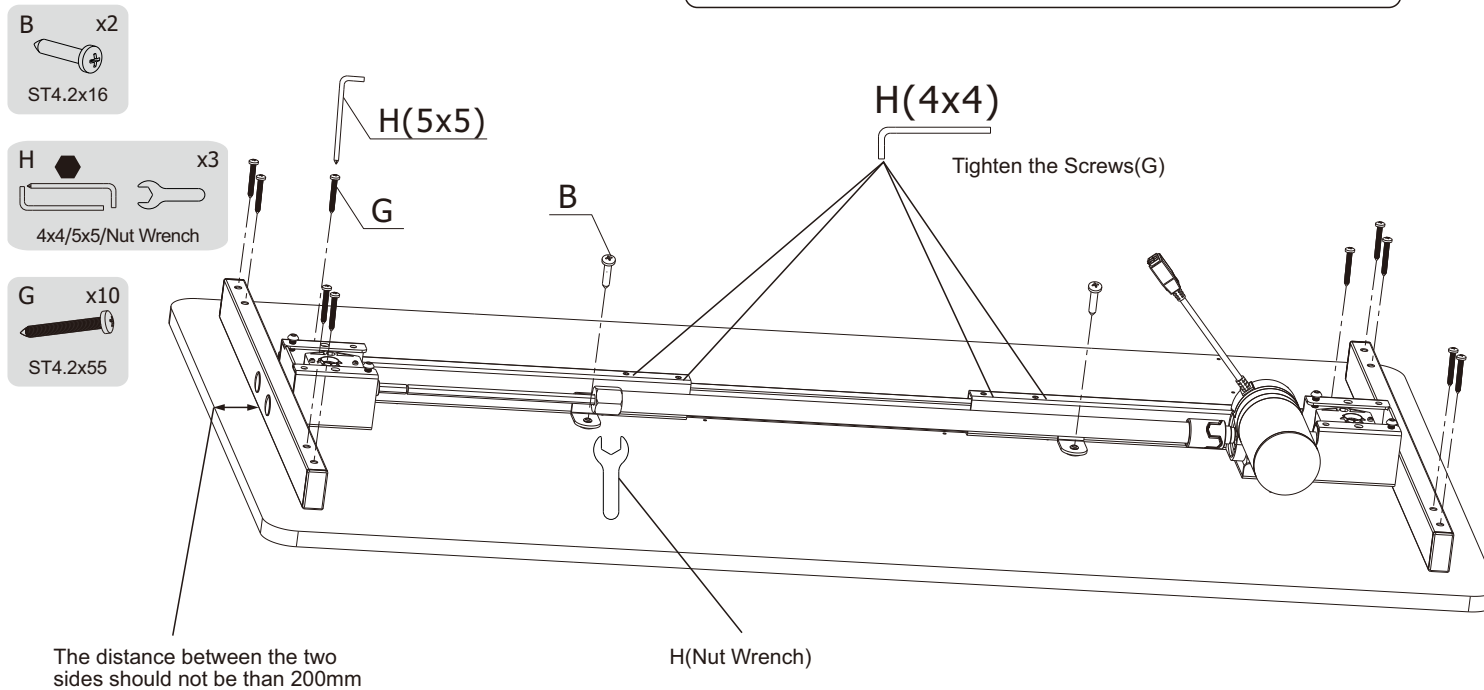
Install Side Tube



Use a 5x5 (with cross) allen key(H) to tighten the screws(E), fix the side tubes (7), and press the hole plug(A) into the side hole.

## STEP3

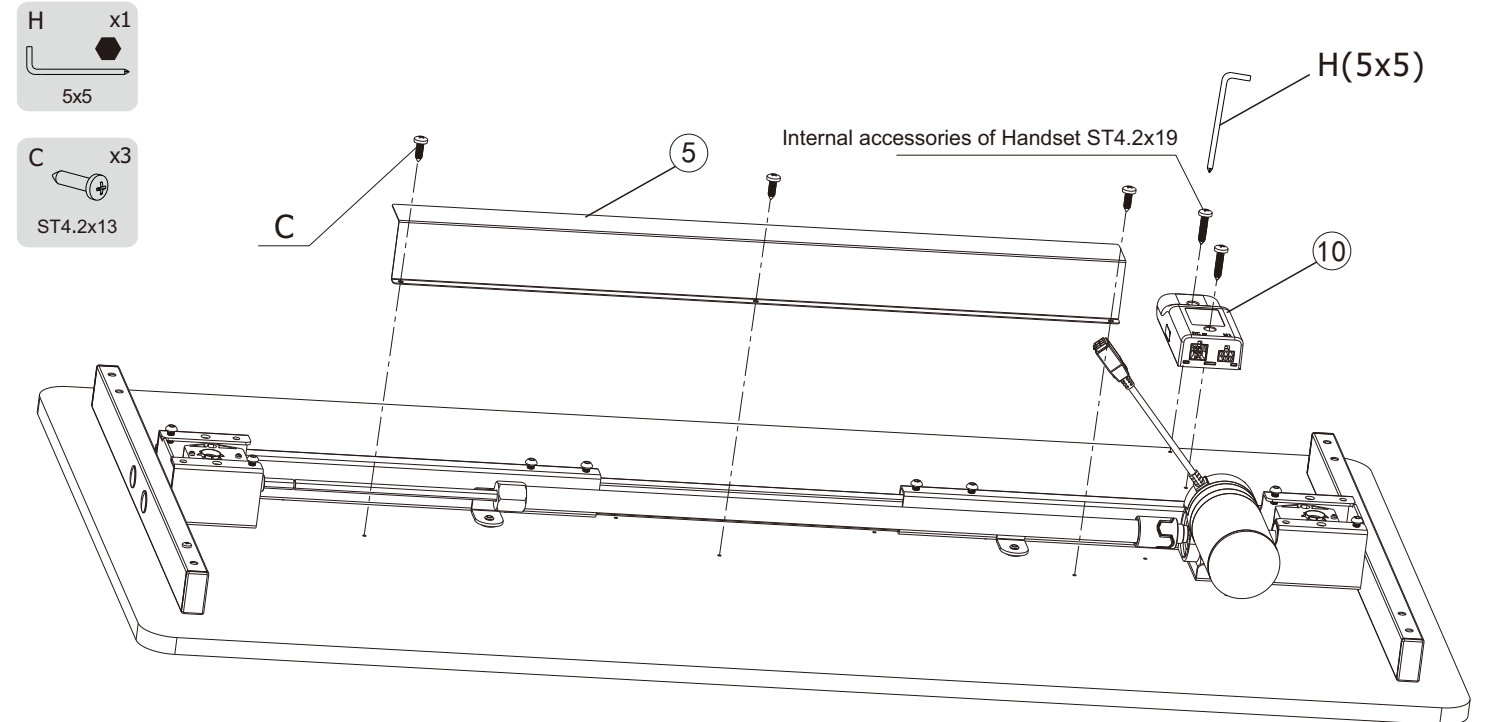
Attach Tabletop to Beam



Install the beam assembly (step 2) on the tabletop, use a 5x5 (with cross) allen key (H) to screw in the screws(G) and the screws(B) and tighten them.

## STEP4

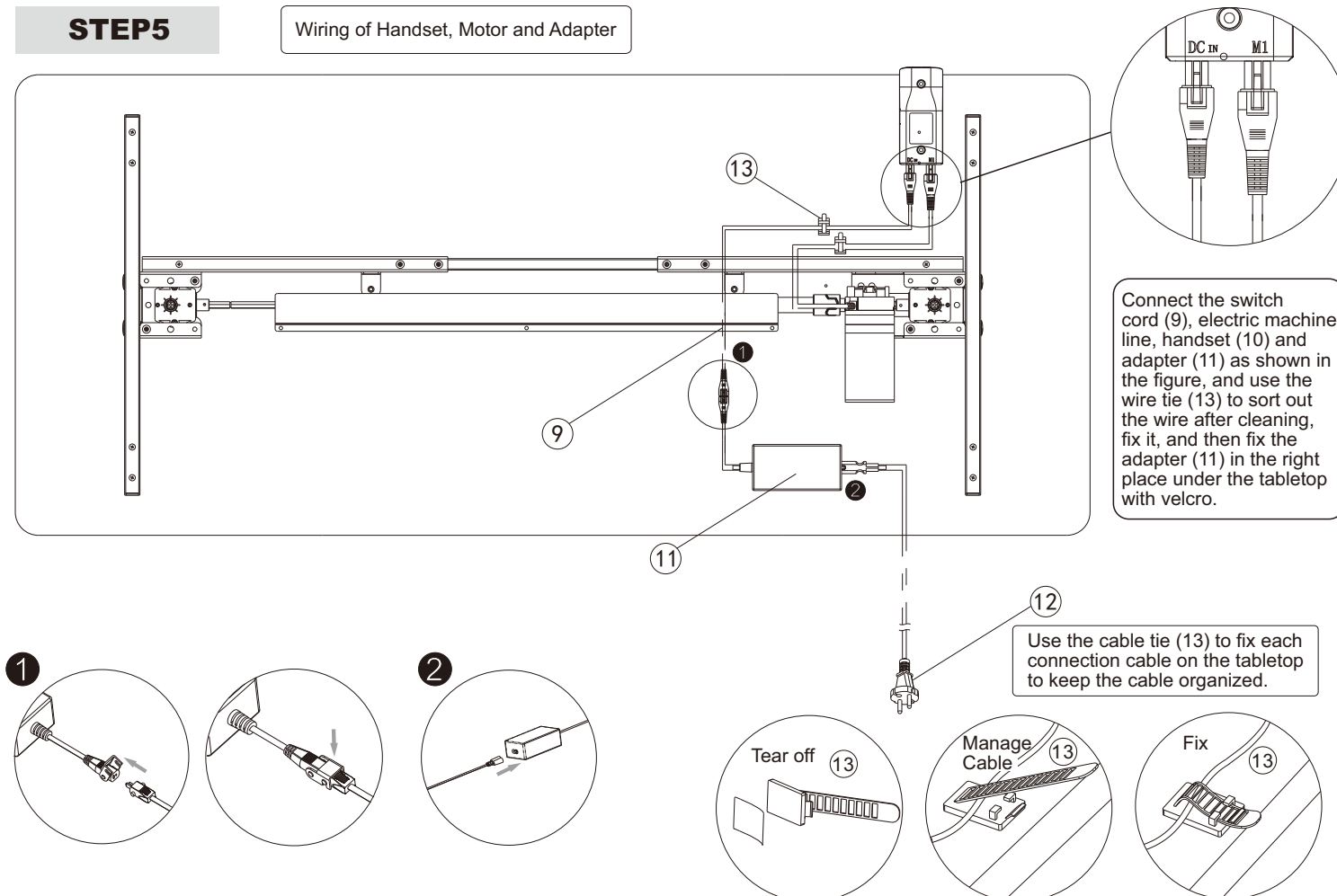
Install Decorative Plate and Handset



Fix the decorative board (5) with screws C to cover the main parts of the transmission rod; fix the handle (10) at the position on the side of the motor (as shown in the figure), and fix it with the ST4.2x19 screws, the internal accessories of Handset.

## STEP5

Wiring of Handset, Motor and Adapter



STEP6

Assemble Lifting Column

H(4x4)

H x1  
4x4

D x4  
M6X12

1.As shown in the picture, insert lifting column into the gear box.

2.Rotate the lifting column (6) to the position as shown in the figure, rotate clockwise after full insertion.

3. After rotating, first use a 4x4 allen key(H) to screw the screws (D) into the position shown in the figure, and then tighten the 8 screws(D).

STEP7

Install Feet

H(4x4)

H x1  
4x4

F x8  
M6x16

As shown in the figure, install the feet (8) on the columns, and tighten the 8 screws(F) with a 4x4 allen key(H). After completing installation, turn the table over and plug in the power supply then it can be normally used.

How to use handset

● “▲”	Adjust the desk upwards
● “▼”	Adjust the desk downwards

Operation

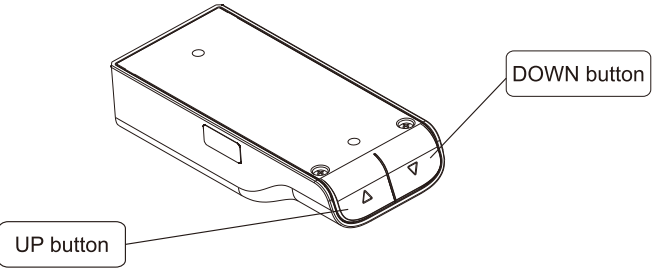
- Button Lift Function  
Press the“▲”or“▼” button to adjust the height of the desk.
- Reset Function  
(1) When at the lowest position, long press the “▼” button for more than 5 seconds to enter the reset mode. The reset will be finished until the lift system rebound and stop after reaching the bottom.  
(2) When the lifting system fails, release the button, long press the “▼” button, the reset will be finished until the lift system rebound and stop after reaching the bottom.
- Anti-collision Function  
(1) Built-in sensor, when encountering any objects, the device instantly stops and reverses to avoid damage.  
(2) Simultaneously press and hold “▲” and “▼” for more than 5s to turn on or off the anti-collision function.

Common fault treatment

The following tips will help you detected and eliminate the common fault and error. If the fault you met is not listed below, please contact with your supplier. Only the manufacturer and professionals are capable for investigating and correcting those fault and error.

Fault phenomenon	Method
No response while long pressing down arrow after connected with a power supply	1.Check if all the cables be connected well 2.Contact your supplier or dealer
The desktop could not be lifted	1.Check if overloaded, max loading: 70kg 2.Contact your supplier or dealer
Overwork (Duty cycle:Max 2min on/30min OFF)	1.Restart it after suspend for 30mins for the working time is too long 2.Contact your supplier or dealer
Go down but not go up	1.Reset 2.Contact your supplier or dealer
Downward sliding	1. Check if overloaded, max loading: 70kg; 2. Contact your supplier or dealer

Button



Attention

1. Power supply: AC100V~240V,50/60HZ
2. Service Environment: 0~40℃
3. Unplug the power plug before cleaning, wipe the dust on surface with slight wet dishcloth when cleaning, be careful not to let the drops into the internal parts, not loose the connector.
4. The electric box contains electronic components, metals, plastics, wires etc., so dispose of it in accordance with each country's environmental legislation, not the general household waste.
5. Check carefully to ensure correct and complete assembly before using.
6. Be familiar with all functions and program settings of the product before first use.
7. Children are forbidden to play on the product because of unforeseen action when playing, so any dangerous consequences caused by this improper action will not be on manufacturers.
8. Slight noise caused by the V-ribbed belt or brake system due to structure will not have any effect on the use of the equipment.
9. Corrosive or abrasive materials are forbidden to clean the equipment. Must ensure that the cleaner used will not pollute the environment.
10. Please make sure there is no hazard sources in your operating environment. e.g., do not litter the tools around. Always be careful to treat the packaging materials in order to avoid any possible danger, e.g. plastic bag may lead to choking hazard to children.
- 11.Keep the original package of the equipment if necessary in case of the future use in transportation.
12. If there appears damage of the power cord, please contact the manufacturer or a professional for replacement.

Waste disposal



This marking indicates that this product should not be disposed with other household wastes. To prevent possible harm to the environment or human health from uncontrolled waste disposal, recycle it responsibly to promote the sustainable reuse of material resources. To return your used device, please use the return and collection systems or contact the retailer where the product was purchased. They can take this product for environmental safe recycling.