

ATTENTION! Please read the user manual carefully before use!

TECHNICAL INFORMATION

Model no.:	51220004 (White) / 51220006 (Black)
Luminaire rating power:	220-240V~, 50/60Hz, 18W
Power supply connection:	Terminal block
Installation method:	Ceiling mounting
Protection class:	Class II
IP rating:	IP 20
Lamp function:	3000K color temperature. Non-dimmable lights. On/Off by wall switch.

This product contains a light source of energy efficiency class E.

LED module: 220-240V~, 50/60Hz, Pon 18W, 3000K: 1980 lm in Sphere (360°).

Product type: LED module with driver on PCB layout.

Non replaceable light source and driver because the lampshade is secured with glue.

WARNINGS

1.  Indoor use only.

2. This luminaire must be installed by a qualified person.

3. Prevent the luminaire from moist environment, in order to avoid leakage and electric shock.


4. Make sure the power supply is disconnected before installation.

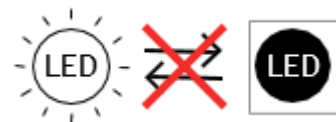
5. While the luminaire is working, don't touch it by hand.

6. The luminaire is approved for its intended use only, any changes are not allowed.

7. If the external flexible cable or cord of this luminaire is damaged, it shall be exclusively replaced by the manufacturer or his service agent or a similar qualified person in order to avoid a hazard.



8.  Meaning of crossed out wheeled dustbin: Do not dispose of electrical appliances as unsorted municipal waste, use separate collection facilities contact your local government for information regarding the collection systems available. If electrical appliances are disposed of in landfills or dumps, hazardous substances can leak into the ground and water then get into the food chain, damaging your health and wellbeing.

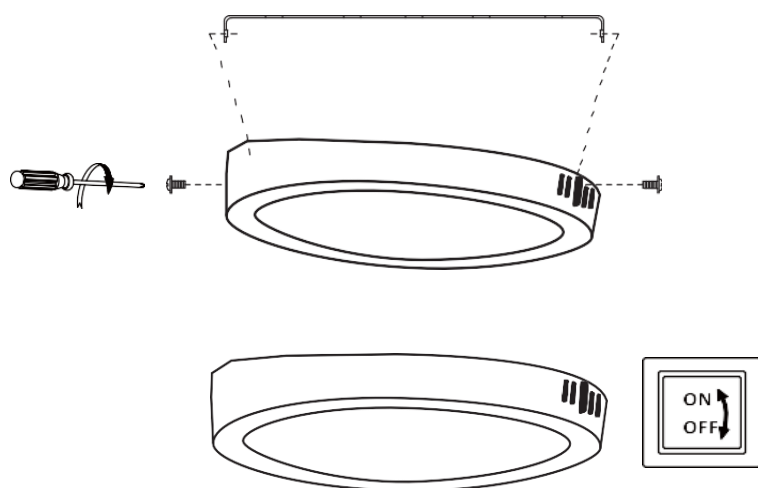
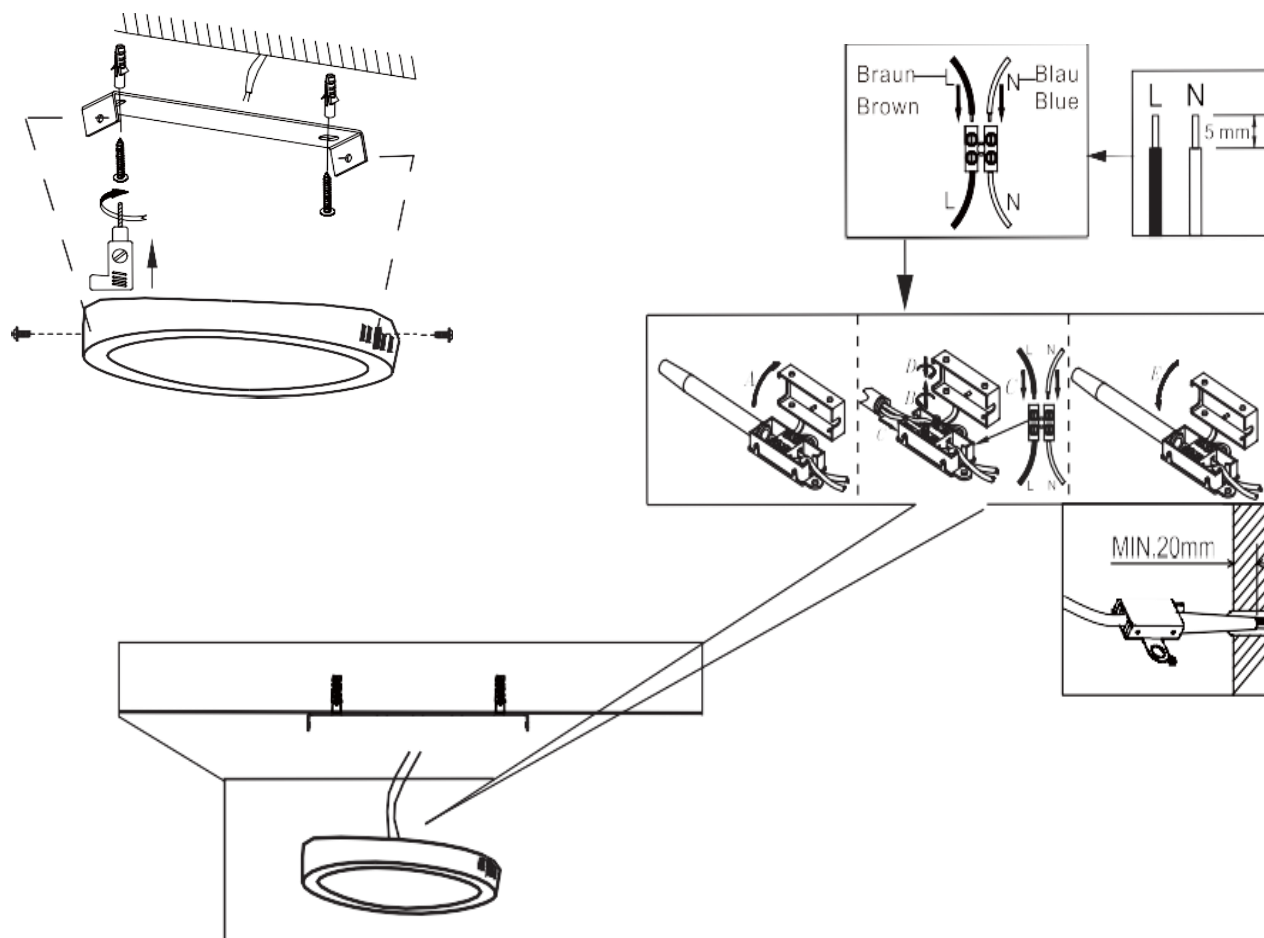






MX Logistika SL, spol.s.r.o. ROZNAVSKA 32
SK-82104 BRATISLAVA Slovakia.
www.moebelix.com
info@moebelix.at



51220004 / 51220006

Luca
BESSONI



Spare parts			
code	part	qty.	article no.
A		2pcs	51220004 / 51220006
B		2pcs	51220004 / 51220006
C		1pc	51220004 / 51220006
D		2pcs	51220004 / 51220006